



Orford-Ness Lighthouse
by Barry Freeman ARPS

EDITORIAL

This is likely to be my last issue of your newsletter. As indicated in Joy's report I wish to resign as Newsletter Editor at the next AGM as part of tapering off my administration jobs, as I approach my 80th birthday. I have enjoyed my years as editor, which started in 1998 when John Anderson was Regional Organiser and continued when at the beginning of 2007 I agreed to serve as Editor for the new RO, Joy Hancock. Over the years I have seen the demise of film being replaced by digital photography and at the same time the newsletter developing from a simple text only document to a full magazine with colour pictures.

On the front cover is a picture I took during the very enjoyable trip to Orford Ness, which was organised by Joy last June. Please excuse my indulgence to have one of my pictures on the cover, but it is the last magazine I am editing for the Region and no one else offered.

This issue features two ARPS panels, a nature submission by Liz Cutting and a Visual Art one by Chris Aldred – see pages 4 and 5. Congratulations to them both.

On the back page is an article by Mike Trendell on HDR, which was held over from last year, due to lack of space. It is very appropriate as since Mike sent me his article he has had a successful FRPS submission, which used his skills at HDR, producing photographs of church interiors under difficult lighting conditions.

On pages 6 and 7 are details of the many Regional events for 2011.

I wish the new editor all the best in his new role. I will continue to attend the Region's activities, meeting my many RPS friends.

Barry Freeman ARPS DPAGB



A band of happy EA members on the way to Orford Ness Island last June - Photographed by John Cucksey

Regional Organiser's Notes

Since writing in the last Newsletter we held a most successful Advisory day at The Chamberlin Hall Bildeston on 2nd October 2010, followed by an equally successful day a Foxton Village Hall, near Cambridge on 27th. November 2011. The weather threatened to do its worst for the November event but we were most fortunate in that there was a break in the ice and snow at just the right time allowing everyone to get to the venue on the day.

At both events there was a great deal of information and help given to all, whether submitting work or attending as an observer.

I must thank all of you who helped in any way at either of these events. Without the tremendous help and support that you give on these days, not only would they not be the success that they so obviously are, we simply could not put these on in the Region. So once again a great big thank you.

The popularity of these days continues and once again we have a lengthy waiting list for advisory places and we are therefore making further arrangements to hold yet more of these days. Quite obviously the gaining of the Society's distinctions is of great importance to many of the members and the help and advice given at the Advisory days have proved invaluable to those participating. This is quite apparent by those of you who go on to achieve the aspired distinction. I do feel that we must therefore give this area priority at this time.

Unexpectedly, once again we are able to hold an actual Licentiate Print Assessment in the Region and preliminary details appear in this Newsletter. This is another ideal opportunity for local members to submit a panel for the Licentiate – and to see the deliberations without having to travel to Bath or the Midlands. If you are thinking about possibly working towards the L, why not book for the advisory day in May with the idea of submitting in September. This should give you time to work on any advice given by the panel members.

Because of the large mainly rural area that we cover, once again it has proved prudent to avoid the worst of the winter months (i.e. December, January and February) when arranging our meetings. However I do hope that you will all endeavour to support the events to be held during the forthcoming year.

As you all know it is coming to that time of the year when we must hold our Annual General Meeting. In order to further democracy and the involvement of you the members we will now be holding an annual

election to the various posts required in order to run the Region. This year the meeting will take place on Sunday 13th March and Nomination forms are included with this Newsletter.

All of those presently holding office, as far as I am aware, are prepared to continue with the exception of Barry Freeman, who as you know has asked to step down as Newsletter Editor. I am pleased to be able to let you all know that Rod Blackmore has offered his services in this capacity. It is anticipated that he will take over from Barry at the forthcoming AGM. However, we all of us presently holding office will be more than happy to hear of others wishing to participate in the running of the Region.

In the event of there being more than one person for any of the positions we will hold a ballot on the day.

I look forward to seeing many of you at the forthcoming events.

Joy

Regional Contact Details

Regional Organiser: Joy Hancock FRPS MPAGB
Telephone: 01263 822507
Email: joyhancock24@gmail.com

Deputy Regional Organiser: Ann Miles FRPS MPAGB
Telephone: 01223 262637
Email: ann@pin-sharp.co.uk

Asst. Organiser David Sherwood LRPS
Telephone: 01284 767117
Email: csherw@talktalk.net

Treasurer: John Thompson, ARPS
Telephone: 01449 676471
Email: thompson@imago.fsworld.co.uk

Newsletter Editor: Barry Freeman ARPS DPAGB
Telephone: 01379 668749
Email: photo.bazfree@btinternet.com

Webmaster Jim Duncan, ARPS
Email: rps.eaweb@googlemail.com

Projected Image Exhibition John Speller
Telephone:
Email: JohnDSpeller@aol.com

Distinction Successes

Fellowship

Professional and Applied

Mike Trendell, Norfolk

Associateship

Nature

Liz Cutting, Suffolk

Graham Goddard, Essex

Philip Shaw, Essex

Visual Art

John Thompson, Suffolk

Exemption

Iris Farrington, Essex

Contemporary

Jeanette Josse, Cambridgeshire

Licentiate'ship

Gill Beckett, Essex

Keith Rose, Essex

Alex Tyler, Essex

Our sincere congratulations to all on an excellent achievement. It is not often that we have a new Fellow of The Royal Photographic Society within the Region and my particular congratulations are extended to Mike Trendell of Norwich, Norfolk.

If we have missed anyone do please let me know so that we may acknowledge your success and include details in your Regional Newsletter.

We invite all those successful in attaining an RPS distinction to show their work at a future meeting. It is proposed that the Annual Exhibition Selection day in July and the Annual General Meeting held in February/March of each year be appropriate meetings for workers to show successful panels.

If you cannot make these meetings just let me know and alternative arrangements will be made to include you at an appropriate meeting.

RPS WEB SITE

www.rps.org.uk

A reminder - please do use the web site to check on the latest information concerning regional meetings etc.

We have some space on the site for members' images. All that you need to do is to let Jim Duncan ARPS rps.eaweb@googlemail.com have your images saved at 465 pixel width in .jpg format. It will be great if we can change the image(s) shown at least on a monthly basis.



Grey Heron



Dartford Warbler



Kingfisher



Stonechat



Dunnock



Green Woodpecker



Spotted Flycatcher



Goldfinch feeding juvenile



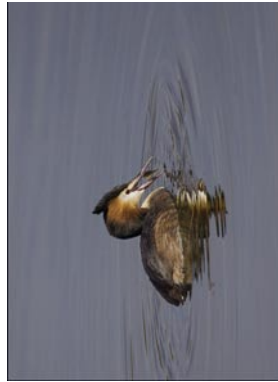
Green finch



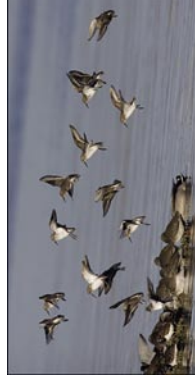
Great Spotted Woodpecker



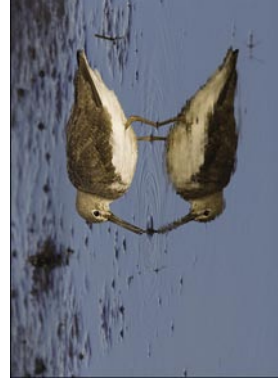
Meadow Pipit



Gt. Crested Grebe



Dunlin Flock



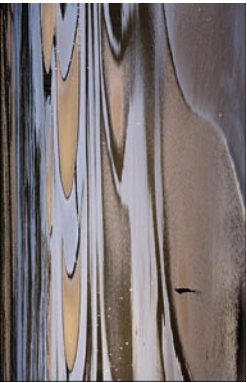
Green Sandpiper



Snow Bunting

Liz Cutting ARPS Panel - 8th September 2010

My panel shows a variety of local birds, whether resident or seasonal visitors, from a range of habitats - the garden, parks, heathland, woodland, reservoirs and marshes. There are no rarities, just British birds that can be found every year not too far from my home. In addition to showing the beauty of birds in their habitat, I have tried to capture some aspects of behaviour such as feeding, collecting nest material and preening. Interesting birds can be found without travelling to the ends of the earth or indeed all corners of Britain. All but one of these birds was photographed within my home county or its adjoining neighbours and none have required me to travel more than two hours.



Applectross



Loch Leven



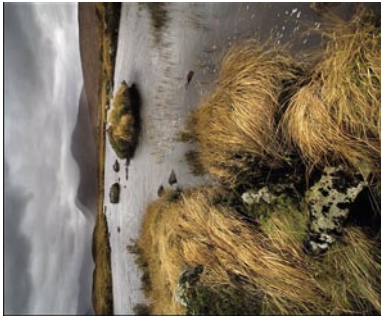
Fernaugh Strand



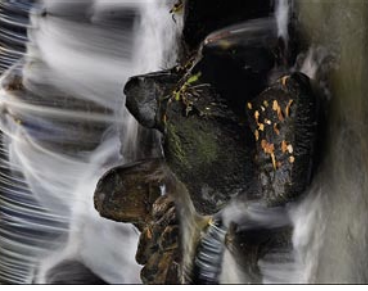
Clints and Grykes



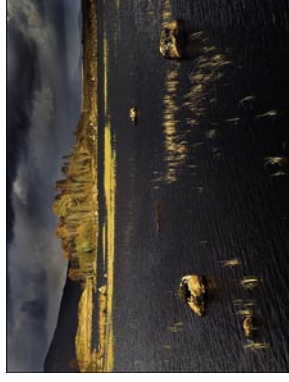
Waldendale



Rannoch Moor



Aberfeldy



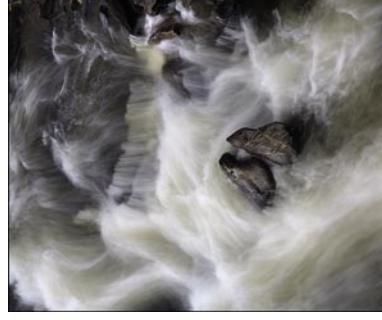
Eileen Molach



The Thatcher Tree



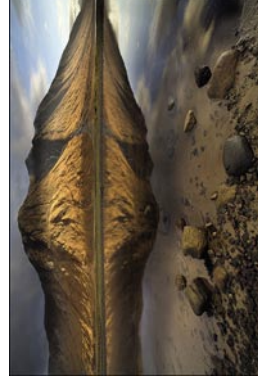
Glencoe



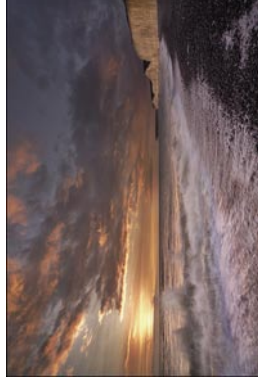
Kilin



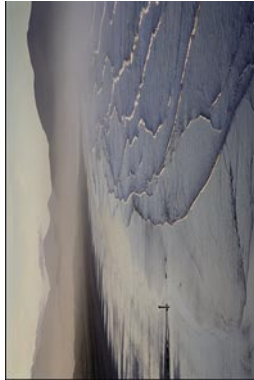
Minard



Loch Etive



The Sisters



Inch Strand

Chris Aldred ARPS Panel - 14th Oct 2009

My aim was to portray Britain's wild and wonderful landscape in its many guises and to show how different weather conditions create and affect mood. I like to use both landscape and portrait formats and, wherever possible, incorporate foreground interest to give the image depth. Ultimately, my landscape images are intended to create emotion and a desire in the viewer to be at that viewpoint at the same moment in time.

Future Events

SUNDAY 13th MARCH, 2011

ANNUAL GENERAL MEETING and MEMBERS DAY

At The Chamberlin Hall, Bildeston, Suffolk

10.30a.m. for 11.00a.m. Start

Tea/Coffee will be provided but please bring your own packed lunch

In the morning we will hold the Annual General Meeting which will include the election of the Regional Officers. Nomination forms are included with this Newsletter. All of those presently holding office are prepared to continue with the exception of Barry Freeman, who as you know has asked to step down as Newsletter Editor.

Following the meeting the day is over to you the members. During the past year we have seen many distinction successes and we shall be delighted if you can come along and share those successful panels with us. One of the most notable is the recent Fellowship attained by Mike Trendell of Norwich and I do hope that Mike will join us in order to show his panel and talk a little about his road to success. In addition we shall hold our usual pre-advisory day session in order to give any of you thinking about submitting for a distinction, the confidence to put your work before an appropriate panel member at an Advisory Day.

Of course, if you just wish to bring images along for general discussion we will be more than happy to accommodate you.

There is no charge for this day and there is no need for you to book in advance – just come along, join in and support your Region.

14th MARCH, 2011 for one week
2010/11 Print Exhibition

Showing of part of the 2010/11 Print Exhibition at The Library Chelmsford. Usual Library opening times. For further information contact Pat and Melvyn Frewin – telephone 01245 225674

SUNDAY 8th MAY 2011

ADVISORY DAY

Covering Licentiate and Associateship - Travel and Visual Art

At The Chamberlin Hall, Bildeston, Suffolk

10.00 a.m tea/coffee for 10.30a.m. start to approx 4.30p.m.

The panel members will be – Licentiate - *to be advised*

(These will be posted on the web site as soon as available)

Associateship - Paul Foley FRPS – Visual Art/Travel

Paul is a highly experienced panel member in both Travel and Visual Art.

Teas/coffees are provided. Please bring a packed lunch. There is good disabled access to the hall and ample car parking facilities. The hall also now has air-conditioning.

This day is for anyone, whether or not a member of the RPS, to obtain constructive advice on proposed submissions for the LRPS or Visual Art or Travel for ARPS Distinctions or to enjoy the day as an observer. For the LRPS, you need to bring a panel of 10 prints, slides or digital files together with up to 10 spares if possible. For the Travel or Visual Art ARPS, 15 prints, slides or digital files again with up to an equal number of spares if possible. All prints should be mounted but NOT framed.

This is another great opportunity for everyone to see a great many images and to learn a little about the criteria required in the various categories. All Categories cover an enormous range of work so we should have an enjoyable and stimulating day.

For those submitting work the cost will be £15 Spectators £10

Early booking is advised. (Form enclosed)

SUNDAY 24th JULY 2011

**Selection of Print Exhibition and Projected Image
Exhibition**

At The Chamberlin Hall, Bildeston, Suffolk
10.30a.m. for 11.00a.m. Start
Tea/Coffee will be provided but please bring your own
packed lunch

There will be a £4 entry fee to each of the exhibitions
which will include admission on the day. For
those wishing to simply observe there will be a £4
admission fee.
Full details and entry forms together with a booking
form will be included with the next Newsletter

31st JULY 2011 to 14th AUGUST, 2011

**First showing of the East Anglia Members Print
Exhibition**

**At The Church Rooms, Cromer Road, Mundesley,
Norfolk.**

Open daily from 10.00a.m. to 5.00p.m. – Free Entry
Free Car Parking on land opposite the Church
| Rooms.
Light Refreshments available
Disabled access

SUNDAY 18TH SEPTEMBER 2011

**Licentiate Print Assessment followed by
presentation of recently successful Fellowship Panels**

**At The Chamberlin Hall, Bildeston, Suffolk
10.00 a.m tea/coffee for 10.30a.m. start to
approximately 4.30p.m.**

Teas/coffees are provided. Please bring a packed
lunch. There is good disabled access to the hall and
ample car parking facilities. The hall also now has air-
conditioning.

Yes, we are indeed fortunate to once again hold a
Licentiate Print Assessment in the Region.

During the morning and early afternoon we will be
dealing with the applications for the Licentiate
assessment. Once completed there will be an
opportunity to see recently successful Fellowship
panels.

Not only will this be a rare opportunity to have a
Licentiate panel assessed in the Region and to
see the Licentiate panel at work, it is also a rare
opportunity to view many images covering a wide
range of work and to see a number of Fellowship
panels giving all an opportunity to see at first hand
the high standard required and to understand the
criteria required for the various disciplines. As such
the day promises to be most enjoyable and should
appeal to all.

If you wish to submit a panel you will need to contact
the Distinctions Department to book your place.
However, to come along as an observer at a cost of £5
you may book your place through the Region. Forms
will be inserted into the next issue of the Newsletter.

OCTOBER 2011

Advisory Day

In view of the continued high demand for places we
anticipate arranging a further Advisory Day during
October – full details later

*If you are interested in a particular discipline in the
Associateship category and would like your name
added to a waiting list, please let me know which
category and whether your work will be in print
or digital form. If there is a sufficient number for a
particular category we will ensure that it is covered.
Similarly if you would like your name added to the
waiting list for Advisory places at Licentiate level
again let me know together with details of whether
your work will be print or digital. Joy*

Special Interest Groups

Digital Imaging Group

They have now appointed a Regional Representative
in East Anglia. If you are interested in this sub-group
of the Digital Imaging Group please contact John
Margetts LRPS – email: easterndigital@ukart.com

Creative Group

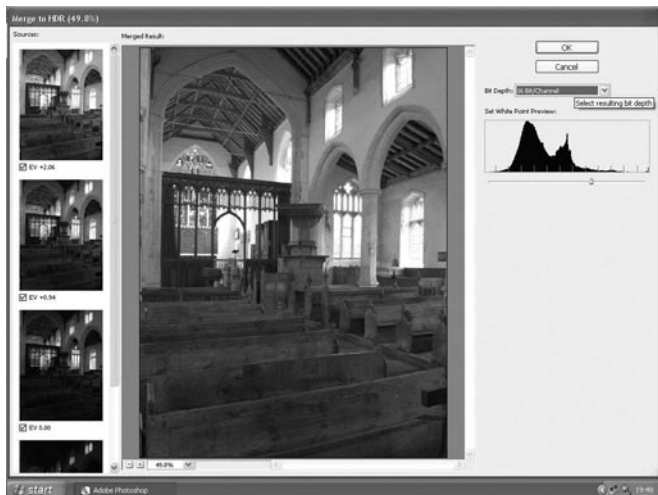
Their first meeting of 2011 is on March 20th, which
features the Group AGM and selection of the
Creative Group Print Exhibition. The event will be held
at Witleford, Cambridgeshire. Contact David Jordan
ARPS for further details, Tel: 01953 718655
Email: daveandjoanjoan@yahoo.co.uk

High Dynamic Range – HDR

When photographing scenes such as church interiors it is often found that the range between highlights and shadows is too great to cover in one shot. This is where the concept of HDR can be used by the photographer to overcome the difficulties. Using HDR from 3 to 5 images are taken. In practice this means that when photographing a church interior readings are taken from the highlight and shadow areas using the spot metering option on the camera and a range of exposures between the two worked out. This often shows in terms of EV's as +2, +1, 0, -1, -2. Because of depth of field considerations all shots should be taken at a given aperture and the shutter speed altered. Typical speeds for the above might be 1/200, 1/100, 1/50, 1/25 and 1/10. Obviously the camera should be mounted on a tripod and if possible an electronic shutter release used.

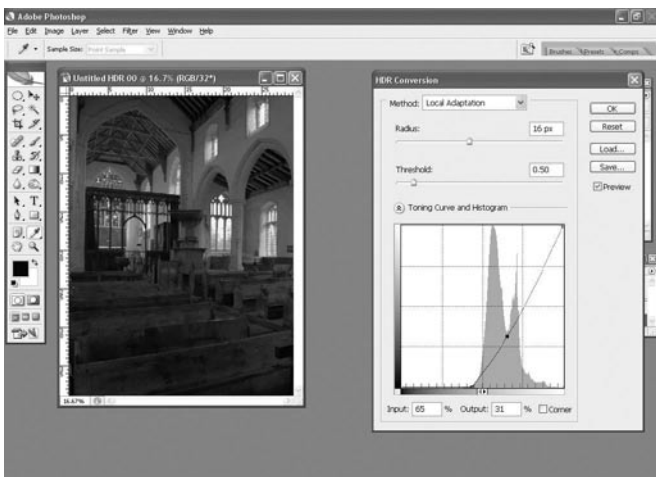
In producing HDR images I have only used Photoshop CS2 which is rather long winded. There are special programs such as Photomatrix which may be easier to use. In Photoshop go to **File>Automate** and **Merge to HDR**. Go to **Browse...** for the images, an HDR folder on the Desktop is recommended, or use the images already open and tick the box “ **Attempt to automatically align source images**” (in case there has been the slightest movement of the tripod)

Aligning of images takes some time but eventually figure 1 comes up onto the screen:



The left hand column (**Sources**) shows the files to be used and the histogram is on the right. First changes the **Bit Depth** to 16/channel and then darken the picture in order to keep all the information by moving the white point to the right end of the histogram.

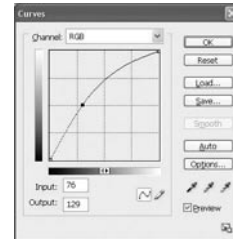
Press OK and wait while the HDR conversion takes place.



When Figure 2 comes up click on **Method** and Select **Local Adaptation** from the drop-down menu. If the Toning Curve and Histogram are not visible as in **Fig 2** click on the button below the “**Threshold**” slider .Move the point to the bottom of the histogram , place a point in the centre of the curve and bring it down as shown There is now all the digital information on the file. The picture at this point should look rather dark.

The file is now in Photoshop proper. Go to **Image Size** and put resolution to 200 and resize. Save as a Photoshop file.

Now make a new **Background Layer – Curves** Alter curves to bring out shadow areas and mid-tones as required. Do not worry about highlights eg windows.



Next bring up **Image>layer mask>reveal all**. Using a suitable brush or eraser bring out detail in the highlight areas. However this should be done gradually at a fairly low opacity or the results will be too dark. After this go to **Layer mask – apply**. Finally flatten the image. The latter steps from the curves onwards may have to be repeated in order to bring out all the tones in very contrasty images.

The resultant image is shown below. As can be seen there is plenty of detail in both the shadow and highlight areas of this somewhat unknown Norfolk church.

My thanks are due to my friend Geoff Parker for starting me off on this subject.

Mike Trendell ARPS (Now FRPS)



Interior of Brisley Church, Norfolk by Mike Trendell